

Education

www.atcosl.com.au

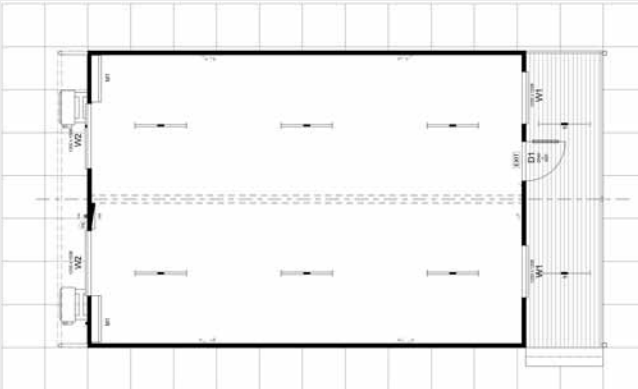


Classrooms | Toilets | Canteens | Chapels | Libraries | Science Labs | Art and Computer Rooms

ATCO Structures & Logistics



12.0m x 6.9m Classroom



12.0m x 24.15m Science/Food Technology Building



ALWAYS THERE. ANYWHERE.

As a leader in the development of modular construction, ATCO has set the standard for modular school building systems. For over 61 years ATCO has provided modular building solutions for schools all over the world.

With the flexibility of purchase or rental, our specialised staff are able to provide greater choice and installation options for your school, recognising the needs of your staff, students and school community.

The ATCO range of Education building solutions includes:

- Learning Centres/Classrooms
- Toilet & Ablution blocks
- Outside school care facilities
- Office Space
- Canteens/Tuckshops
- Prayer Chapels
- Multi-purpose buildings
- Libraries
- Science Labs
- Art and Computer Rooms



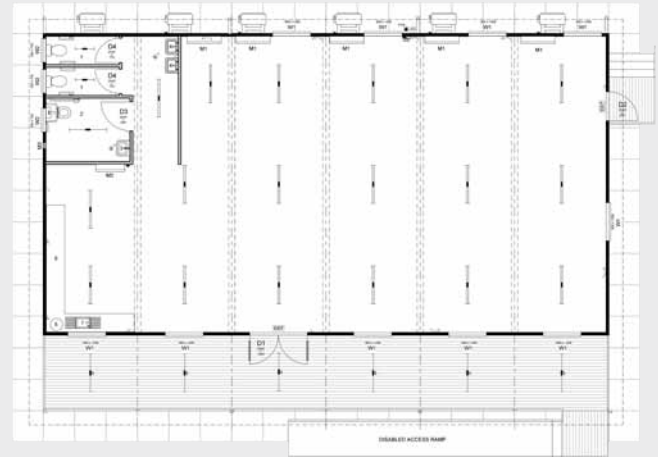
THE COMPLETE MODULAR SOLUTION – OUR PRODUCTS ALLOW FOR THE EXPANSION OF YOUR CLASSROOMS AND ASSOCIATED FACILITIES WHEN YOU REQUIRE.

Examples only. Call us for current stock and purpose built solutions. Squares on examples are indicative of 1 square metre.

12.0m x 27.2m Classroom



12.0m x 18.0m After School Care



12.0m x 27.6m Classroom



8.4m x 6.0m Tuckshop



"I have been associated and dealing with ATCO Representatives from the start of 2003 up to the present day and within my relationship with ATCO staff we have achieved many projects such as installations of classrooms, sourcing office solutions and relocating buildings. These works have been carried out to an excellent standard and efficiently always finishing the tasks on time. I have no hesitation in recommending ATCO Structures Staff and the work they do to any prospective company wishing to contract them." Westside Christian College

Locations

QUEENSLAND

Brisbane

(Australia Head Office)
ATCO Structures & Logistics Pty Ltd
149-151 Magnesium Drive
Crestmead QLD 4132
Phone: (61) 7 3412 8600
Fax: (61) 7 3803 6590

Brisbane

ATCO Structures & Logistics Pty Ltd
95 Quinns Hill Road East
Stapylton Qld 4207
Phone: (61) 7 3382 6299
Fax: (61) 7 3382 6288

Townsville

ATCO Structures & Logistics Pty Ltd
826 Ingham Road
Bohle QLD 4818
Phone: (61) 7 4795 6300
Fax: (61) 7 4774 6440

Mackay

ATCO Structures & Logistics Pty Ltd
Walker Complex, Harbour Road
Mackay QLD 4740
Phone: (61) 7 4829 3800
Fax: (61) 7 4942 4469

Gladstone

ATCO Structures & Logistics Pty Ltd
11 Ganley Street
Gladstone QLD 4680
Phone: (61) 7 4979 0633
Fax: (61) 7 4979 0655

NEW SOUTH WALES

Newcastle

ATCO Structures & Logistics Pty Ltd
2376 Pacific Highway
Heatherbrae NSW 2324
Phone: (61) 2 4987 7340
Fax: (61) 2 4987 6360

Sydney

ATCO Structures & Logistics Pty Ltd
47 Mulgrave Road
Mulgrave NSW 2756
Phone: (61) 2 4545 2900
Fax: (61) 2 4577 7372

VICTORIA

Melbourne

ATCO Structures & Logistics Pty Ltd
128 Hallam Valley Rd
Dandenong South VIC 3175
Phone: (61) 3 8765 8200
Fax: (61) 3 9791 9271

WESTERN AUSTRALIA

Perth

ATCO Structures & Logistics Pty Ltd
28 Armstrong Road
Hope Valley WA 6165
Phone: (61) 8 6252 6200
Fax: (61) 8 6252 6299



For further information

Telephone – (61) 7 3412 8600
Facsimile – (61) 7 3803 6590

www.atcosl.com.au

